



WATER RESISTANT

D

Your new watch is a water-resistant watch. Check the marking on the back of the watch, find below the relevant usage recommendation.

*** Water Resistant 3ATM OR 30M (100 Feet)**

Shall with sand splashes of water while washing the hand. But should not be worn while swimming or diving.

Water Resistant 5ATM or 50M (165 Feet)

* Suitable for showering or swimming in shallow water.

Water Resistant 10ATM or 100M (330 Feet)

Suitable for swimming, snorkeling, but should not be worn while scuba diving.

Diver's 20ATM or 200M (660 Feet)

Meets higher requirements of water resistance and suitable for scuba diving.

We don't recommend swimming or diving with your watch unless it has a screw down crown and is water resistant to at least 10ATM or 100 Meters)

GENERAL CARE FOR A WATER RESISTANT WATCH

E

- * DO NOT OPERATE ANY BUTTONS WHEN THE WATCH IS WET OR IN WATER.
- * DO NOT WEAR THE WATCH IN A HOT SHOWER OR SAUNA. EXTREME HEAT CAN DAMAGE THE WATCH.
- * AFTER USE IN SALT WATER OR CONTACT WITH SAND, RINSE THE WATCH IN A STREAM OF FRESH WATER AND DRY IT WITH SOFT CLOTH.
- * LEATHER STRAPS ARE MORE EASILY DAMAGED BY FREQUENT EXPOSURE TO WATER. AFTER EVERY USE IN WATER, WIPE THE STRAP WITH A SOFT CLOTH, TO IMPROVE THE LIFE OF THE STRAP.

IMPORTANT

YOUR WATCH IS POWERED BY SR 621W BATTERY AND THE BATTERY LIFE ABOUT 2 YEARS

STÜHRLING ORIGINAL



INSTRUCTION MANUAL - R1

(CITIZEN QUARTZ)

JR00/10

CAUTION:

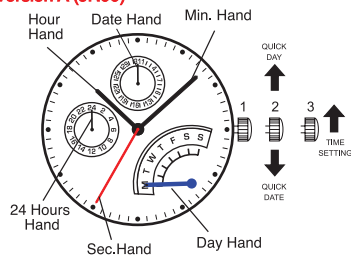
DO NOT USE QUICK SETTING BETWEEN 21:00 HRS. TO 03:00 HRS. AS IT MAY DAMAGE THE MOVEMENT.



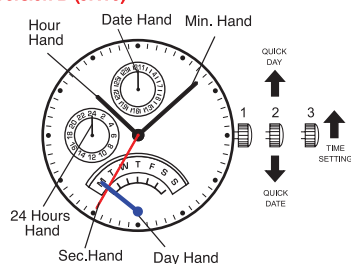
WATCH DISPLAY

A

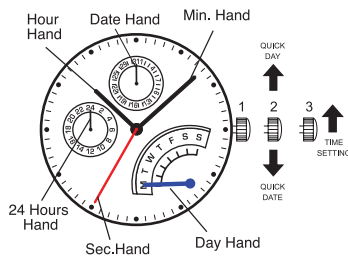
Version A (JR00)



Version B (JR10)



QUICK DATE & TIME SETTING

B

QUICK DATE SETTING - CROWN POSITION 2

- Gently pull the crown to position 2 and rotate the crown forward to set the date.
- After the date has been set, push the crown back to the position 1.

TIME SETTING - CROWN POSITION 3

- Gently pull the crown to the position 3 and rotate the crown forward to set the time.
- Push the crown back to position 1 after setting the time.

DAY SETTING

C

QUICK DAY SETTING- CROWN POSITION 2

- Gently pull the crown to position 2 and rotate the crown forward VERY SLOWLY to set the date. (*Please do not stop when the hand is between the day like the following picture.)

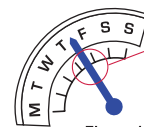


Figure.1

Please do not stop when the day hand is in this position.

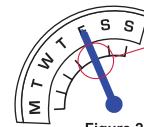


Figure.2

Please set the day hand just positioned on the day scale.

- * If the day hand stops at a position like Figure. 1, please turn the crown clockwise very slowly and stop soon after the day hand positioned like Figure. 2.
- After the day has been set, push the crown back to the position 1.

